

REHABILITATION

Amfibi XL Hygiene Commode



Amfibi XL Hygiene Commode

The Amfibi XL is designed to accommodate bigger, heavier patients and therefore provides extra space and strength and electrical height adjustment. Maximum user weight is 250 kg.

Plenty of room

Maximum user weight for the Amfibi XL is 250 kg and seat depth is larger than standard. The hygiene chair has also been widened to 64 cm between armrests to provide extra room and good stability.

Lockable armrests

Amfibi XL has armrests that can be flipped up and locked in position to make it easier for the patient to be of help with the transfer.

Built-in soft seat

The XL's seat and back are adapted for an upright posture that does not close the pelvis. The soft, polyurethane seat comes standard and built in to the chair. It minimises pressure on the hips, tendons and blood vessels and is designed to suit both men and women.

Easy to clean

The seat is easy to remove and clean, while its rounded front edge contributes to a comfortable leg position.

Swing-away, detachable footrests

The footrests flip-up, swing-away and are easily detachable.

Guides and waste containers are available as accessories.

Durable materials

Manufactured from corrosion-proof materials.

Easy control

Electrical adjustment via a cabled remote which is sealed to a high protection class (IP65) for optimal safety.

Adjustable backrest

The soft, comfortable backrest relieves pressure on bony areas. It is easily adjustable for best support and seat depth. Machine washable.

Directionally locking/lockable castors

One of the castors can be locked directionally for improved safety during transit. The other castors are lockable.

250kg
SWL

Electric height adjustment

Amfibi XL has a unique pillar design for quick and easy seat height adjustment. The seat can be raised by up to 81 cm from its lowest position and thus requires minimum effort from care staff.



REHABILITATION

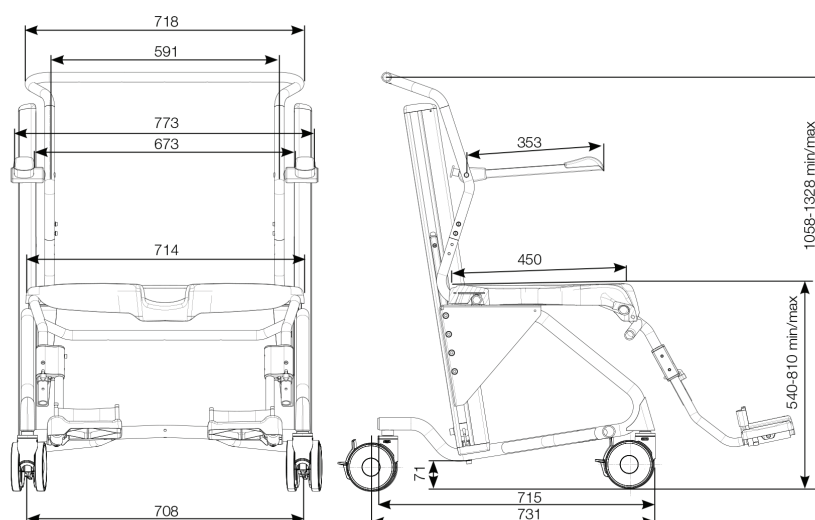
Amfibi XL Hygiene Commode



Product code	Product name
RHGA-56-204	Amfibi XL Hygiene Commode

TECHNICAL SPECIFICATIONS

Max. user weight	250 kg
External width	79 cm
Seat height	55-81 cm
Width between armrests	67 cm
Seat depth	49 cm



ACCESSORIES



Heel Loops
RHGA-56-220



Safety Bar
RHGA-56-212-XL



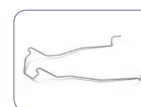
Side Supports
RHGA-56-216



Splash Guard
RHGA-56-213



Waste Container
RHGA-56-209



Waste Container Holder
RHGA-56-218



Safety Belt Hip
RHGA-56-217



Safety Belt Chest
RHGA-56-229



Amputee Support
RHGA-56-228-L/R



Calf Support
RHGA-56-227-L/R



Footrest
RHGA-56-257-L/R



Castor with brake
(Various sizes)